

KeyTrail



Cores

The Cores window keeps track of all of your cores, cylinders, and locks whether they are installed or in stock.

Locations

The Locations window displays a list of the doors that the keys open and the cabinets storing the keys.

Hardware Schedule

The Hardware Schedule window records hinges, closers, exit devices and any other door hardware, whether it is in-stock or installed at a location.

Personnel

The Personnel window displays a list of the people in the facility.

Keys

The Keys window displays a list of the keys that open the doors.

Key Symbols

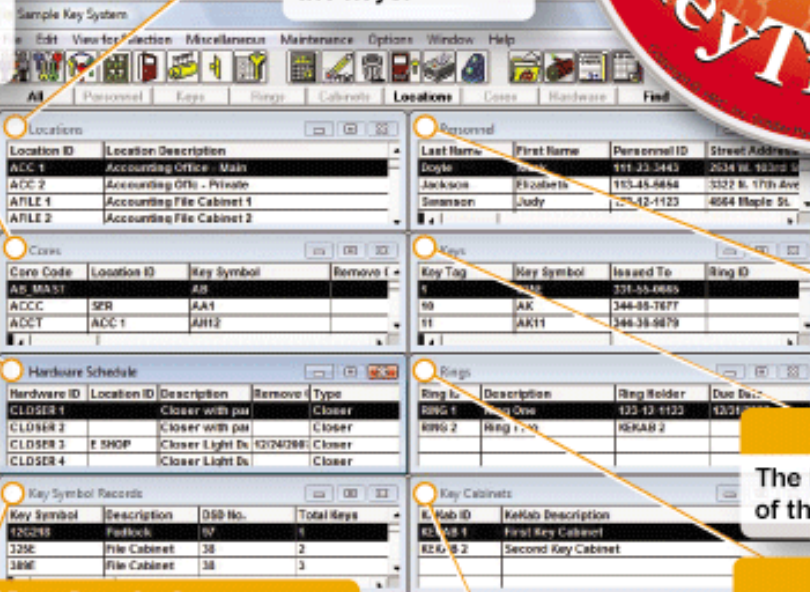
The Key Symbols window displays the bitting and depth & spacing information. Separating Key Symbols from Keys and Cores allows people to view or loan out keys without having access to vital key cutting information.

Key Cabinets

The Key Cabinets window lets you keep track of all your keys in inventory as they are stored in the actual cabinets.

Rings

The Rings window groups keys together. Once together they can be moved and assigned as one.



KeyTrail®



KeyTrail® No. KT-CD

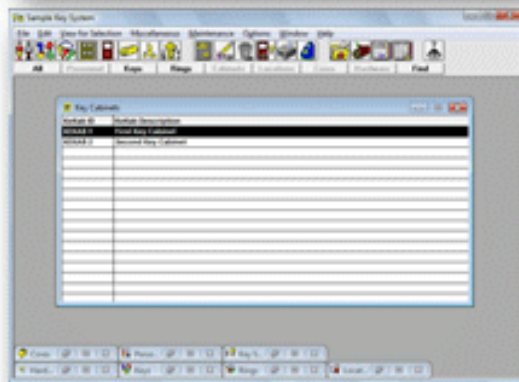
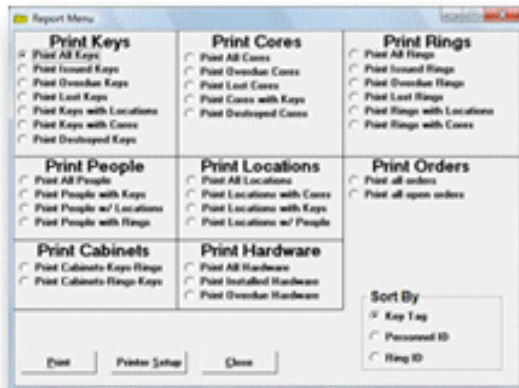
Keytrail® Lite No. KT-CDLITE

Simplified version for one facility for tracking keys, personnel, locks and locations only.

Program requires a PC running Windows XP or later with a Pentium processor (or equivalent) 32 MB RAM (internal memory) and 100 MB of Hard Disk Space.

KeyTrail® is designed to provide complete management of keys, the people that hold them and the doors they open, all from one screen. A vital aspect of the security at any facility is the ability to instantly determine who has access to specific locations. Whether you are a locksmith managing an apartment complex or the facility manager at a university, KeyTrail® allows you to monitor the entire operation.

- **View up to 8 different windows in KeyTrail®** at one time to see lists of personnel, keys, key rings, key cabinets, locks, locations, door hardware and all keying information
- **View up to 4 different windows in KeyTrail® Lite** at one time to see lists of personnel, keys, locks and locations
- Easy to use with **drag-and-drop technology**, pull-down menus and keyboard shortcuts
- A large variety of **detailed reports** is available to provide concise information
- Network compatible for use in **multi-user environments**
- **Flexible security** easily controls the information that users may access
- **Perfect for universities, hospitals, office buildings, factories, airports, institutions, etc.**



KeyTrail® has a very flexible security feature which allows you to set up one or many System Administrators. In turn, they can set up an unlimited number of security profiles to limit or give unlimited access to users on an individual basis. This will allow some people to only have the ability to view records, while giving others the ability to loan out keys without having access to key cutting information. As an additional security feature, **KeyTrail® tracks all transactions, including the system user who performed the transaction.**